

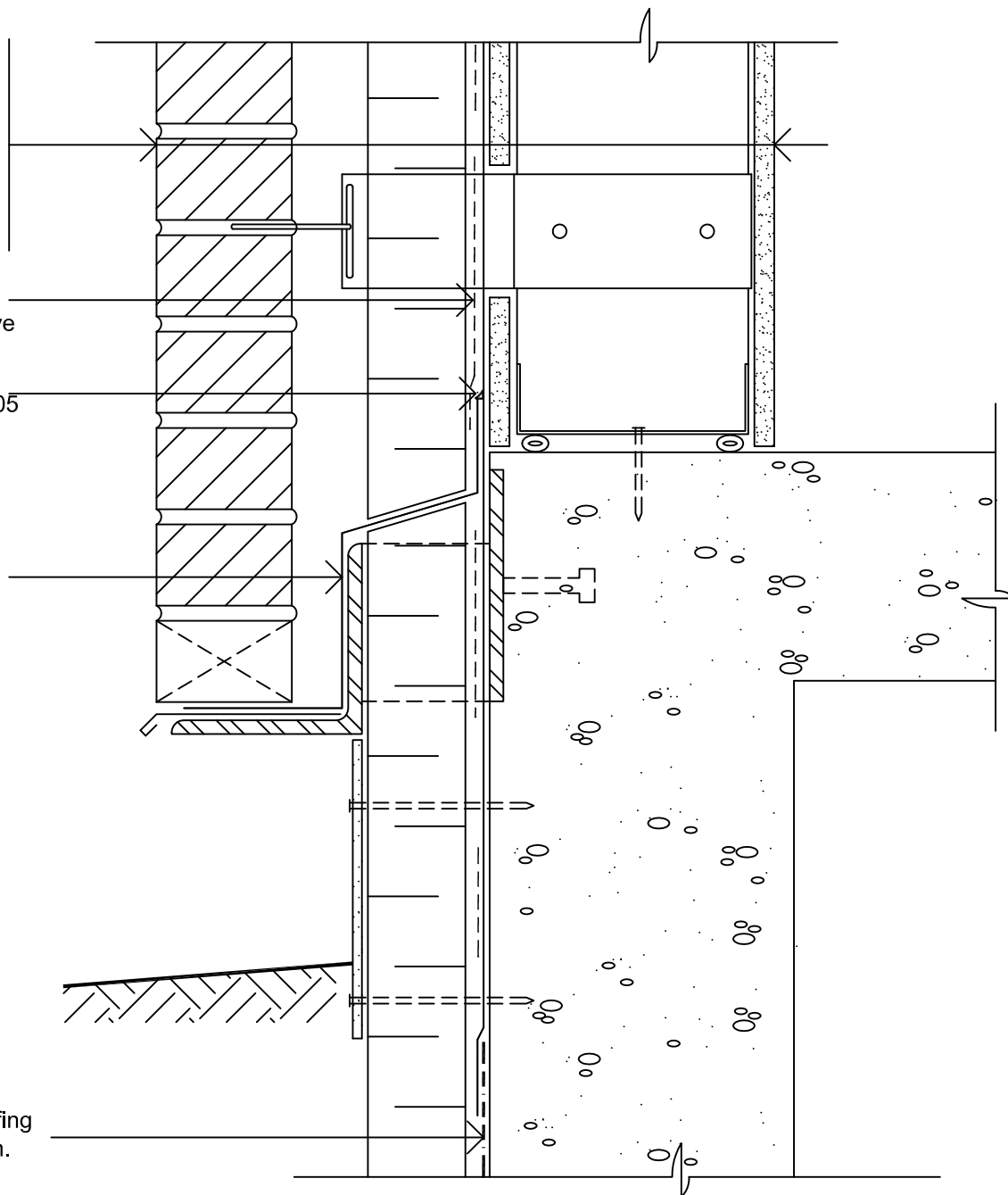
Brick Veneer
Air Space
Insulation
Blueskin® SA or TG
Blueskin® Adhesive
Exterior Sheathing
Steel Stud
Gypsum Board

Air-Bloc 21 or 230-21
Rigid Insulation Adhesive

HE 925 BES Sealant
(or) Polybitume® 570-05

Blueskin® TWF
Thru-Wall Flashing
Sheet

Henry-Bakor waterproofing
or dampproofing system.



Notes:

1. Blueskin® TWF is a self-adhering sheet used for thru-wall flashing applications. Blueskin® TWF is to be applied to a prepared and primed substrate. Seal upper edge of Blueskin® TWF with HE925 BES Sealant or Polybitume® 570-05.
2. An alternate detail for the thru-wall flashing includes extending the membrane across the top of the floor slab prior to installing the lower track. Turn membrane up face of track prior to fastening interior gypsum board.
3. When the brick-tie system is installed prior to the Blueskin® SA, the membrane is cut, fitted and sealed with Air-Bloc 21 around each tie projection. A 50mm(2") lap is needed over the ties.
4. It is recommended that the air/vapour barrier tie into the waterproofing or dampproof membranes.

Blueskin® SA or Blueskin® TG

FOUNDATION DETAIL

BRICK VENEER / STEEL STUD WALL

Scale: N.T.S.

Plot: 1:5

Issued: 08-14-97

Revision: 07

AB-10B96



15 Walsend Drive, Toronto ON M1E 3X6
Technical Services - 800-486-1278
Email: techservices@henry.com
www.ca.henry.com