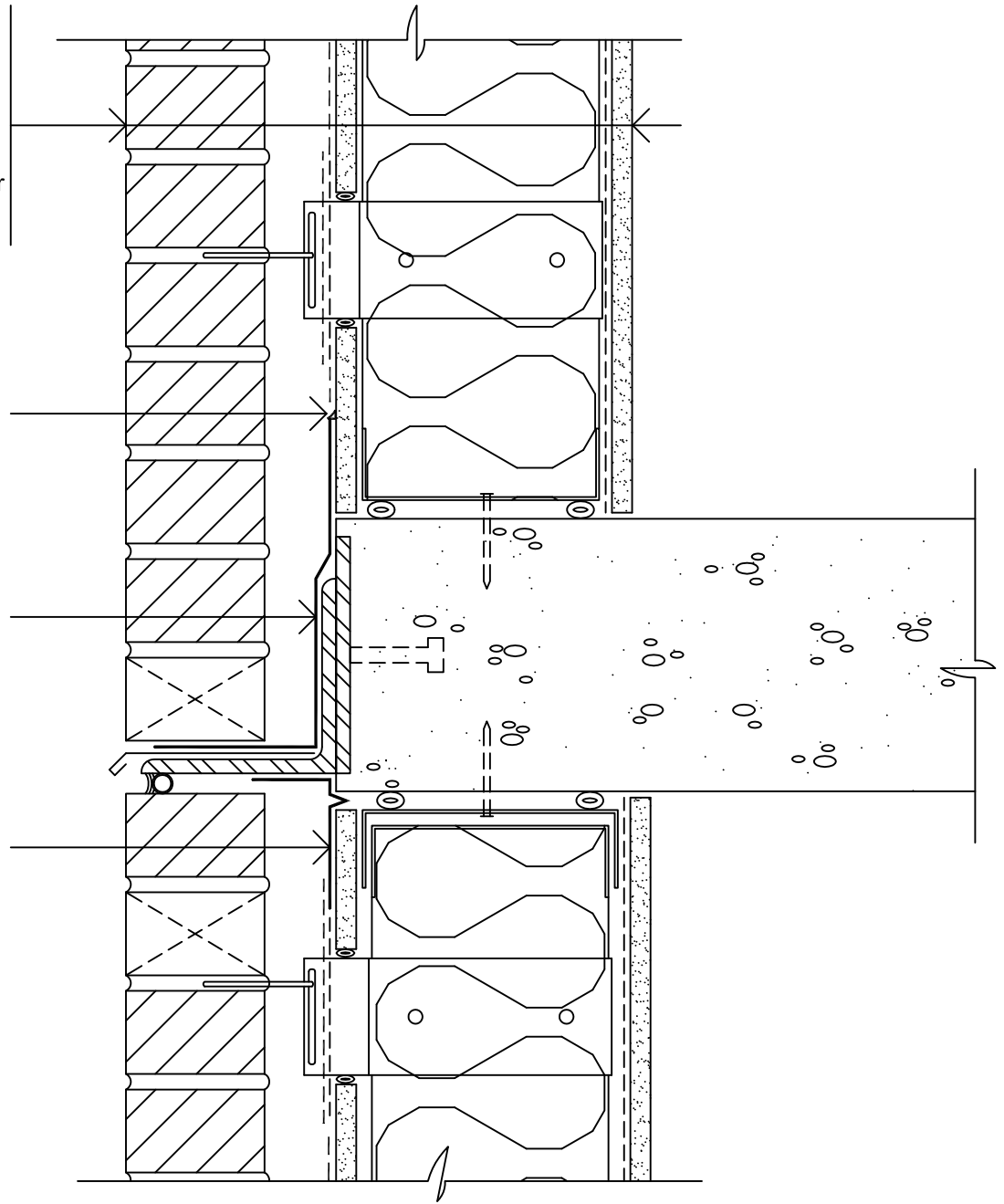


Brick Veneer
 Air Space
 Air-Bloc 07 or 31MR
 Exterior Sheathing
 Batt Insulation
 Steel Stud
 Polyethylene Vapour Barrier
 Gypsum Board

HE 925 BES Sealant
 (or) Polybitume® 570-05

Blueskin® TWF
 Thru-Wall Flashing
 Sheet

Blueskin® SA
 Transition Sheet



Notes:

1. Air-Bloc 07 and Air-Bloc 31MR are specifically designed for use when a vapour barrier is placed on the interior. Vapour entering the wall assembly from the warm side is allowed to diffuse through the Air-Bloc membranes.
2. Seal upper edge of Blueskin® TWF with HE925 BES Sealant or Polybitume® 570-05.

Air-Bloc 07, Air-Bloc 31MR or Air-Bloc 33MR

**SHELF ANGLE
 DETAIL**

BRICK VENEER / STEEL STUD WALL

Scale: N.T.S.

Plot: 1:5

Issued: 08-14-97

Revision: 07

AB-19B96



15 Walsend Drive, Toronto ON M1E 3X6
 Technical Services - 800-486-1278
 Email: techservices@henry.com
 www.ca.henry.com