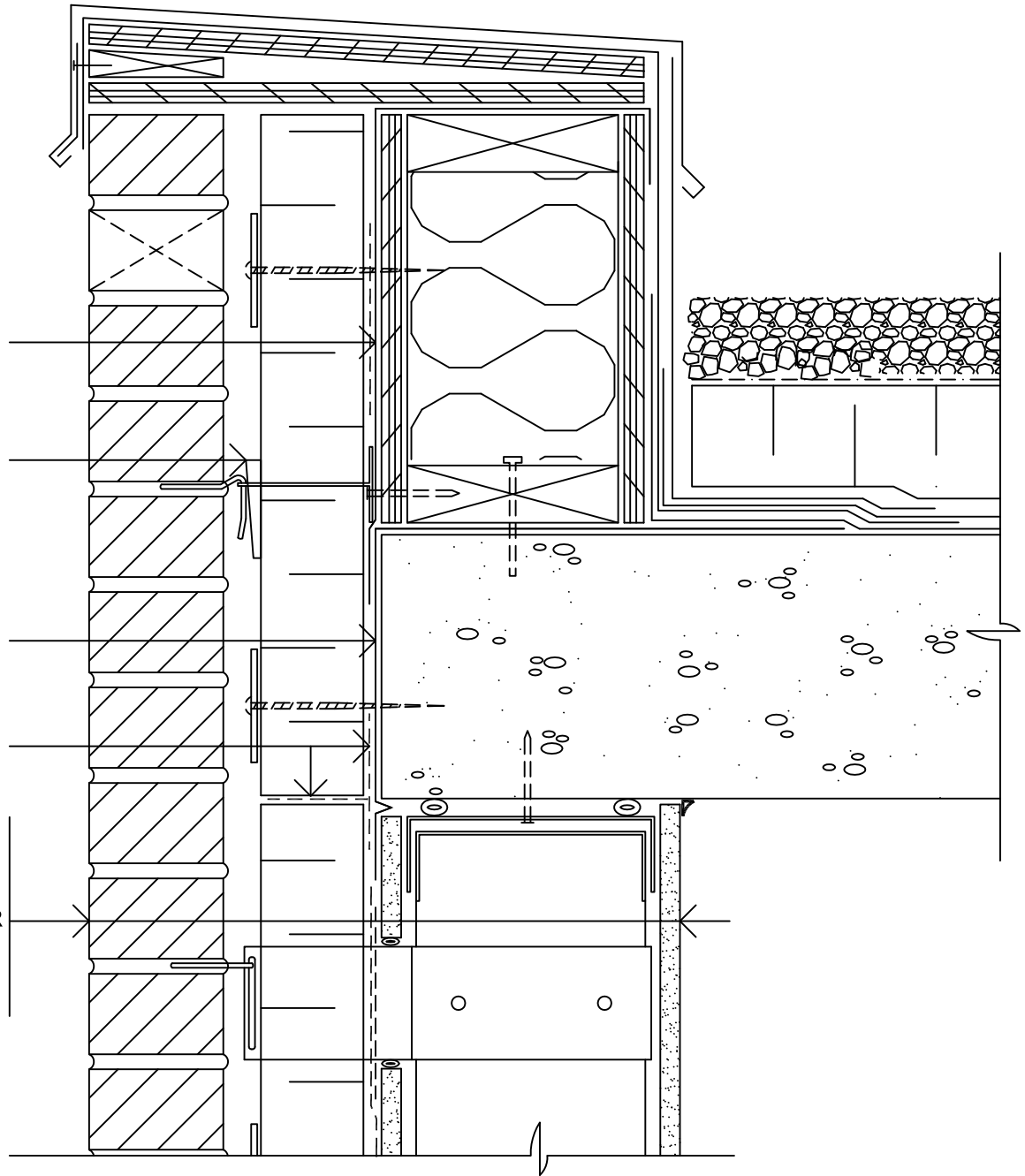


Blueskin® SA or TG  
Transition Sheet

Brick-Tie with  
Insulation Retainer

Blueskin® SA or TG  
Transition Sheet

Brick Veneer  
Air Space  
Insulation  
Air-Bloc 06, 21 or 32MR  
Exterior Sheathing  
Steel Stud  
Gypsum Board



Notes:

1. Blueskin® SA or TG can be used as a transition sheet on all Air-Bloc 06, Air-Bloc 21 and Air-Bloc 32MR systems.
2. Typical application sequence is to install the Blueskin® membrane first, followed by the Air-Bloc liquid membrane.
3. Blueskin® is self-gasketing when self-tapping fastening systems are used.

Air-Bloc 06, 21 or 32MR

## PARAPET DETAIL

BRICK VENEER / STEEL STUD WALL

Scale: N.T.S.

Plot: 1:5

Issued: 08-14-97

Revision: 07

# AB-1B96

**Henry**  
**BAKOR**

15 Wallsend Drive, Toronto ON M1E 3X6  
Technical Services - 800-486-1278  
Email: techservices@henry.com  
www.ca.henry.com