

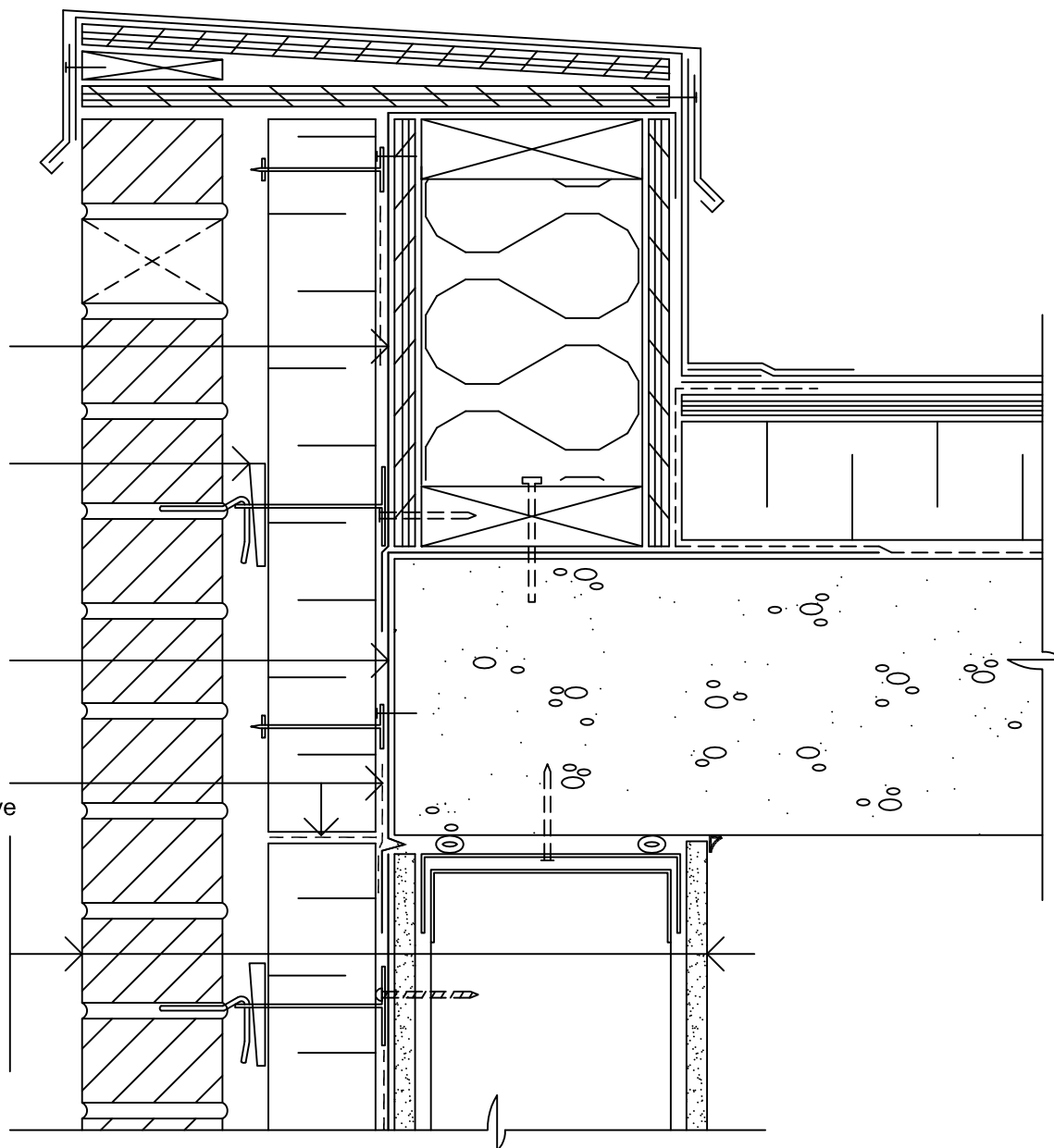
Blueskin® SA or TG
Transition Sheet

Brick-Tie with
Insulation Retainer

Blueskin® SA or TG
Transition Sheet

Air-Bloc 21 or 230-21
Rigid Insulation Adhesive

Brick Veneer
Air Space
Insulation
Blueskin® SA or TG
Blueskin® Adhesive
Exterior Sheathing
Steel Stud
Gypsum Board



Notes:

1. Air-Bloc 21 or 230-21 is applied by notched trowel or gunned in a serpentine pattern to the back of the insulation panels to restrict air movement. Insulation panel joints are also buttered.
2. The transition membrane from the wall to the roof assembly should tie-in to the roof air/vapour barrier to ensure air seal continuity.
3. When Blueskin® membranes are used for the air/vapour barrier; the brick tie system can be installed after the Blueskin® is installed. This helps assure continuity and significantly reduces installation time.

Blueskin® SA or Blueskin® TG

PARAPET DETAIL

BRICK VENEER / STEEL STUD WALL

Scale: N.T.S.

Plot: 1:5

Issued: 08-14-97

Revision: 07

AB-3B96



15 Wallsend Drive, Toronto ON M1E 3X6
Technical Services - 800-486-1278
Email: techservices@henry.com
www.ca.henry.com