

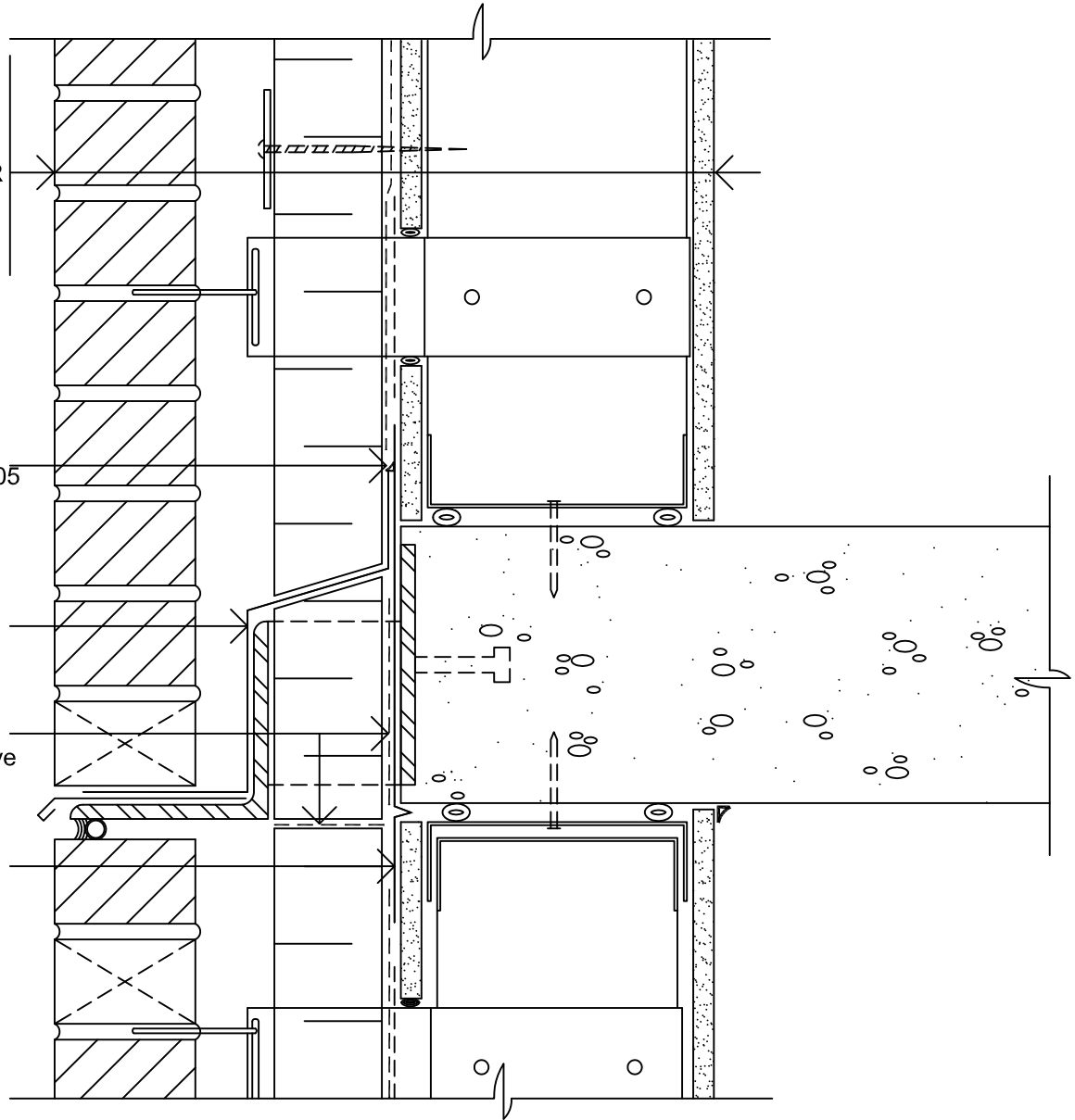
Brick Veneer
 Air Space
 Insulation
 Air-Bloc 06, 21 or 32MR
 Exterior Sheathing
 Steel Stud
 Gypsum Board

HE 925 BES Sealant
 (or) Polybitume® 570-05

Blueskin® TWF
 Thru-Wall Flashing
 Sheet

Air-Bloc 21 or 230-21
 Rigid Insulation Adhesive

Blueskin® SA
 Transition Sheet



Notes:

1. Blueskin® TWF is a self-adhering sheet used for thru-wall flashing applications. Blueskin® TWF is to be applied to a prepared and primed substrate. Seal upper edge of Blueskin® TWF with HE925 BES Sealant or Polybitume® 570-05.
2. Always stop Blueskin® flashing membrane back from exterior face of veneer. Extend the drip edge using prepainted metal to suit.
3. An alternate detail for the thru-wall flashing includes extending the membrane across the top of the floor slab prior to installing the lower track. Turn membrane up face of track prior to fastening interior gypsum board.

Air-Bloc 06, 21 or 32MR

**SHELF ANGLE
 DETAIL**

BRICK VENEER / STEEL STUD WALL

Scale: N.T.S.

Plot: 1:5

Issued: 08-14-97

Revision: 07

AB-5B96



15 Wallsend Drive, Toronto ON M1E 3X6
 Technical Services - 800-486-1278
 Email: techservices@henry.com
 www.ca.henry.com