

Brick-Tie with
Insulation Retainer

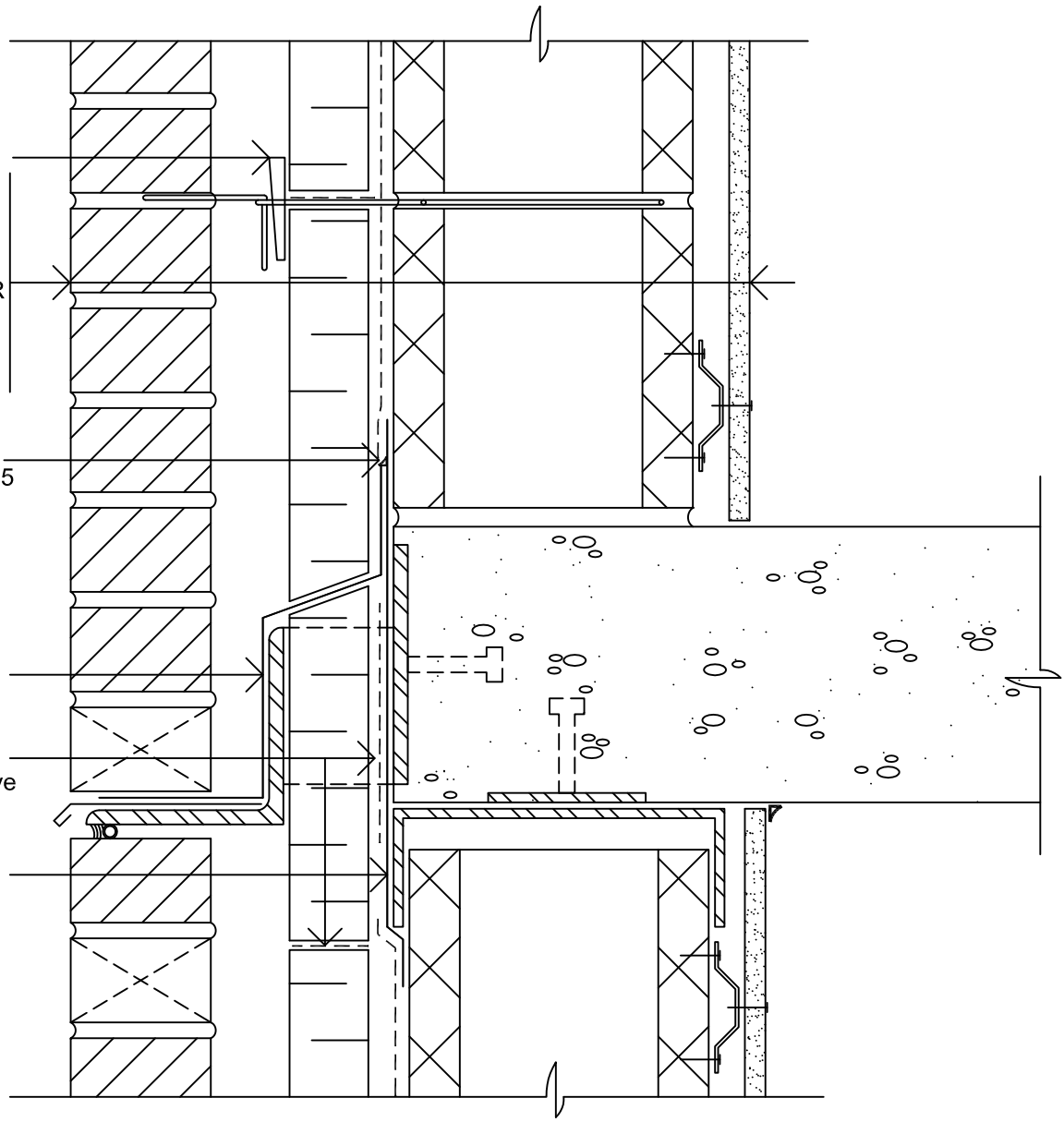
Brick Veneer
Air Space
Insulation
Air-Bloc 06, 21 or 32MR
Concrete Masonry Unit
Furring
Gypsum Board

HE 925 BES Sealant
(or) Polybitume® 570-05

Blueskin® TWF
Thru-Wall Flashing
Sheet

Air-Bloc 21 or 230-21
Rigid Insulation Adhesive

Blueskin® SA
Transition Sheet



Notes:

1. Blueskin® TWF is a self-adhering sheet used for thru-wall flashing applications. Blueskin® TWF is to be applied to a prepared and primed substrate. Seal upper edge of Blueskin® TWF with HE925 BES Sealant or Polybitume® 570-05.
2. Always stop Blueskin® flashing membrane back from exterior face of veneer. Extend the drip edge using prepainted metal to suit.

Air-Bloc 06, 21 or 32MR

**SHELF ANGLE
DETAIL**

BRICK VENEER / CONC. BLK. WALL

Scale: N.T.S. Plot: 1:5

Issued: 08-14-97 Revision: 07

AB-6B96



15 Walsend Drive, Toronto ON M1E 3X6
 Technical Services - 800-486-1278
 Email: techservices@henry.com
 www.ca.henry.com