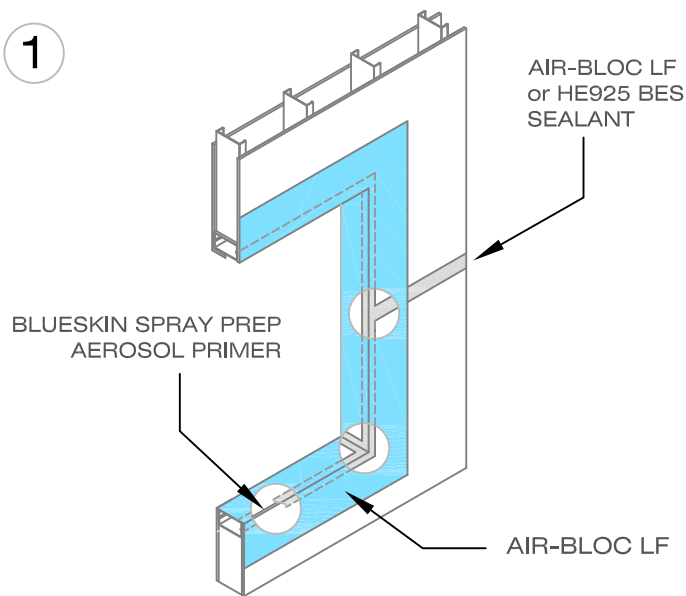
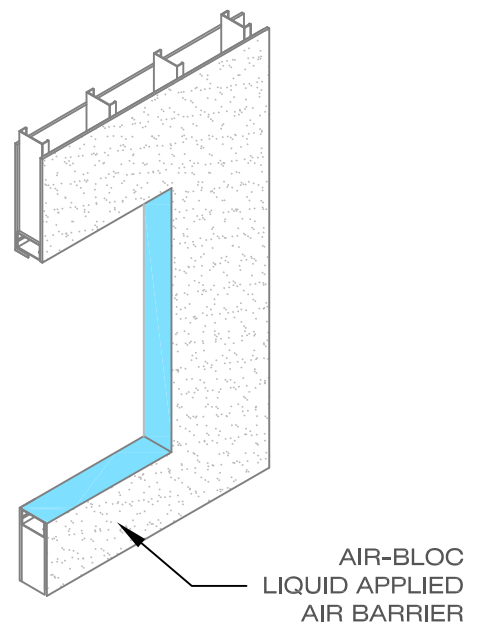


1



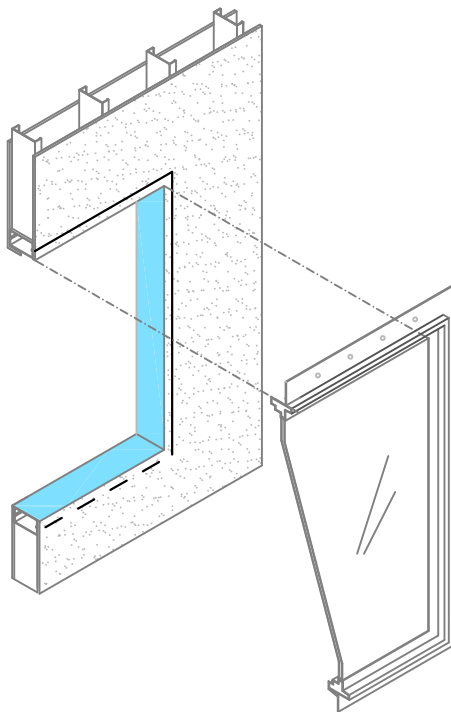
APPLY *BLUESKIN SPRAY PREP AEROSOL PRIMER* TO EXPOSED CUT EDGES OF GYPSUM BOARD. APPLY AIR-BLOC LF (or HE925 BES SEALANT) TO ROUGH OPENING, JOINTS, SHEATHING SEAMS, VOIDS AND FASTENER HOLES PER THE APPLICABLE HENRY TECHNICAL DATA SHEET. EXTEND SEALANT 1" BEYOND ALL JOINTS. APPLY AIR-BLOC LF LIQUID FLASHING OVER ENTIRE ROUGH OPENING AND EXTEND ONTO FACE OF WALL 4 TO 6 INCHES.

2



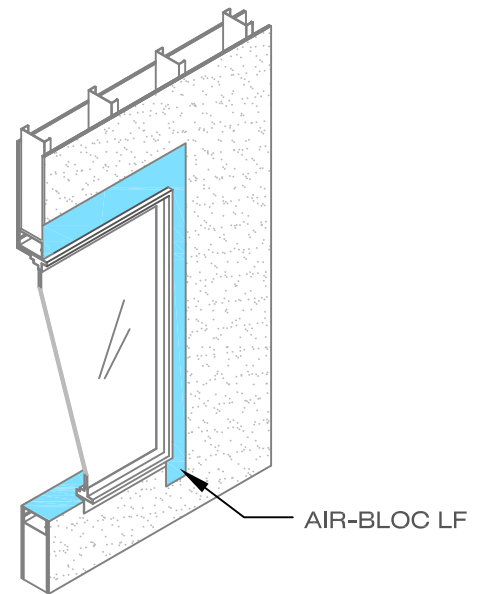
INSTALL AIR-BLOC AIR BARRIER MEMBRANE PER THE APPLICABLE HENRY AIR-BLOC TECHNICAL DATA SHEET. ALLOW AIR-BLOC MEMBRANE TO CURE PRIOR TO INSTALLATION OF WINDOW.

3



INSTALL FLANGED WINDOW AND SEALANT AS REQUIRED BY CONSTRUCTION DOCUMENTS, WINDOW MANUFACTURER OR INDUSTRY STANDARD ASTM E 2112.

4



IF VOIDS OR GAPS OCCURE AT UPPER EDGE OF WINDOW HEAD FLANGE, FILL WITH AIR-BLOC LF (OR HE925 BES SEALANT) AND ALLOW TO CURE. APPLY AIR-BLOC LF LIQUID FLASHING TO WINDOW HEAD AND JAMB FLANGES TO EXTEND MINIMUM OF 2 INCHES ONTO FACE OF VERTICAL WALL AND MINIMUM OF 1 INCH ONTO WINDOW FLANGE.

Henry
COMPANY

LIQUID APPLIED AIR BARRIER

SCALE: N.T.S.

EXTERIOR SHEATHING / FLANGED WINDOW

FIT TO PAPER

AIR-BLOC LF
DETAIL

AB-H140