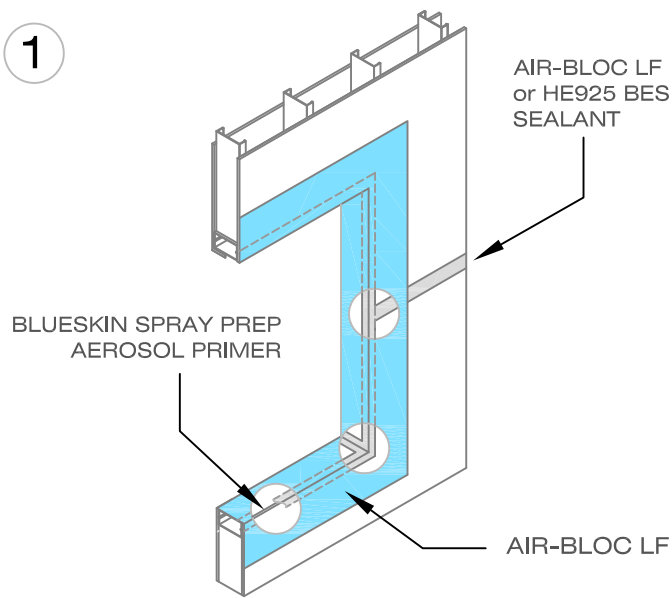
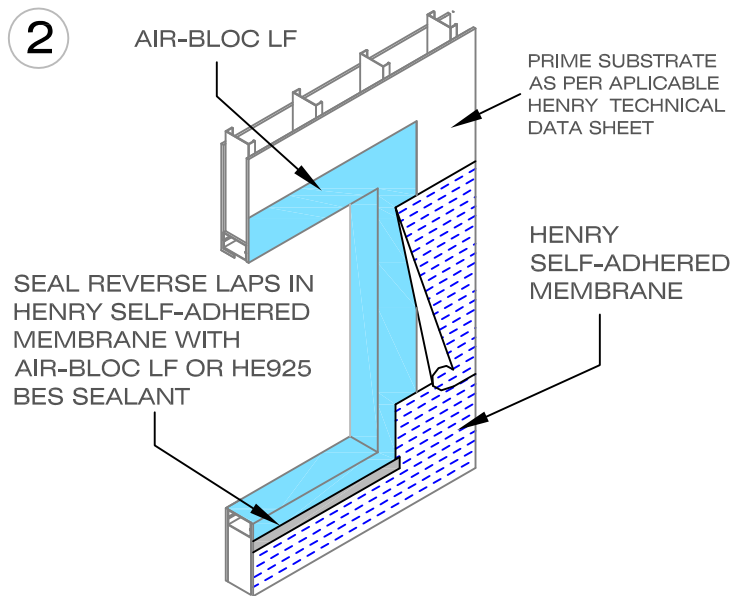


1



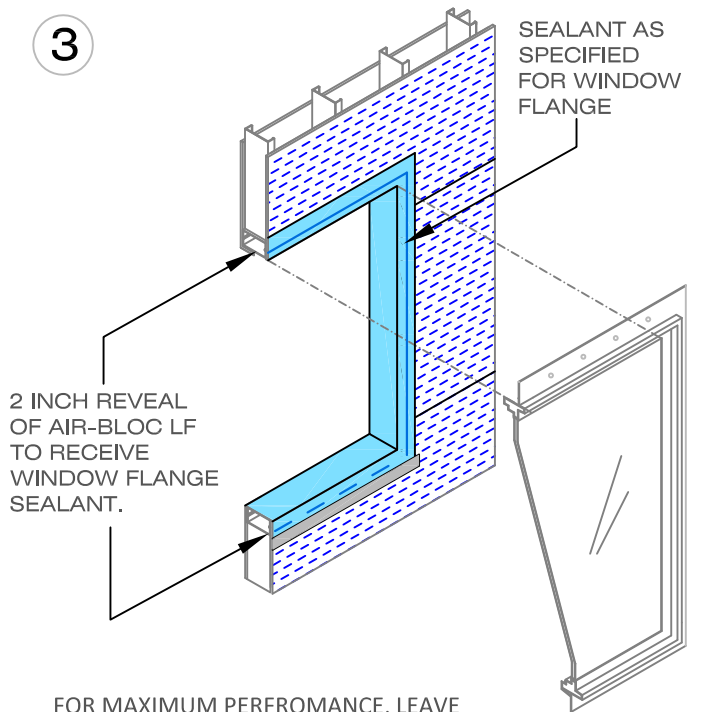
APPLY *BLUESKIN SPRAY PREP AEROSOL PRIMER* TO EXPOSED CUT EDGES OF GYPSUM BOARD. APPLY AIR-BLOC LF (OR HE925 BES SEALANT) TO ROUGH OPENING, JOINTS, SHEATHING SEAMS, VOIDS AND FASTENER HOLES PER THE APPLICABLE HENRY TECHNICAL DATA SHEET. EXTEND SEALANT 1" BEYOND ALL JOINTS. APPLY AIR-BLOC LF LIQUID FLASHING OVER ENTIRE ROUGH OPENING AND EXTEND ONTO FACE OF WALL 4 TO 6 INCHES.

2



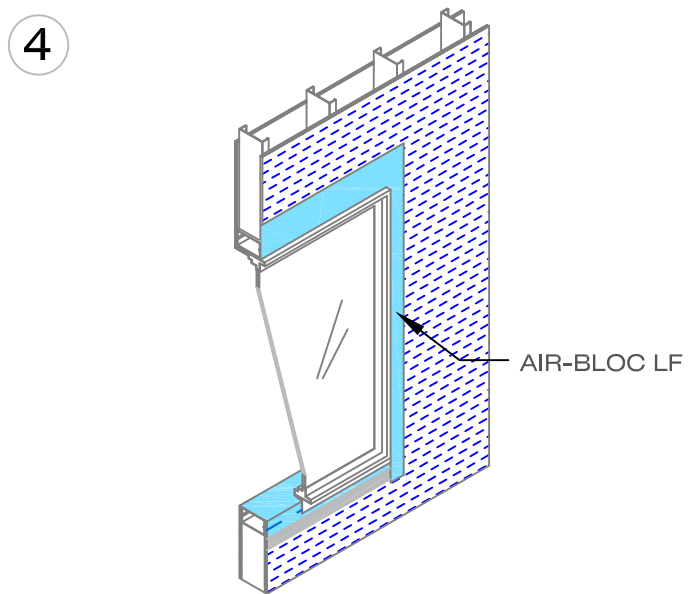
INSTALL HENRY SELF-ADHERED AIR BARRIER MEMBRANE PER THE APPLICABLE HENRY TECHNICAL DATA SHEET. SEAL REVERSE LAPS IN SELF-ADHERED MEMBRANE WITH AIR-BLOC LF OR HE925 BES SEALANT AS SHOWN. INSTALL WINDOWS PER SPECIFICATION, WINDOW MANUFACTURER'S RECOMMENDATION OR INDUSTRY STANDARDS.

3



FOR MAXIMUM PERFORMANCE, LEAVE APPROXIMATELY 2 INCH REVEAL OF AIR-BLOC LF ON FACE OF WALL TO RECEIVE WINDOW INSTALLATION. INSTALL FLANGED WINDOW AND SPECIFIED SEALANT AS REQUIRED BY CONSTRUCTION DOCUMENTS, WINDOW MANUFACTURER OR INDUSTRY STANDARD ASTM E 2112.

4



IF VOIDS OR GAPS OCCUR AT UPPER EDGE OF WINDOW HEAD FLANGE, FILL WITH AIR-BLOC LF (OR HE925 BES SEALANT) AND ALLOW TO CURE. APPLY AIR-BLOC LF LIQUID FLASHING TO WINDOW HEAD AND JAMB FLANGES TO EXTEND MINIMUM OF 2 INCHES ONTO FACE OF VERTICAL WALL AND MINIMUM OF 1 INCH ONTO WINDOW FLANGE.

Henry
COMPANY

SHEET APPLIED AIR BARRIER

SCALE: N.T.S.

EXTERIOR SHEATHING / FLANGED WINDOW

FIT TO PAPER

AIR-BLOC LF
DETAIL

AB-H141