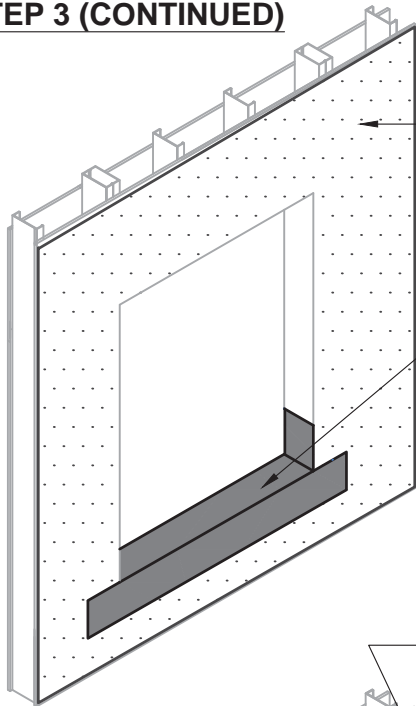
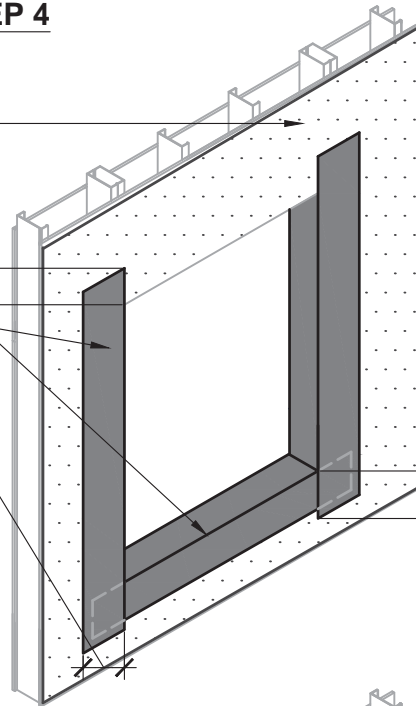


AIR-BLOC® 16MR REBATE WINDOW DETAIL GUIDELINES CONSISTS OF TWO PARTS. REFER TO DETAIL AB16MR - 6B2A FOR PREVIOUS STEPS 1-3.

STEP 3 (CONTINUED)



STEP 4



AIR-BLOC® 16MR

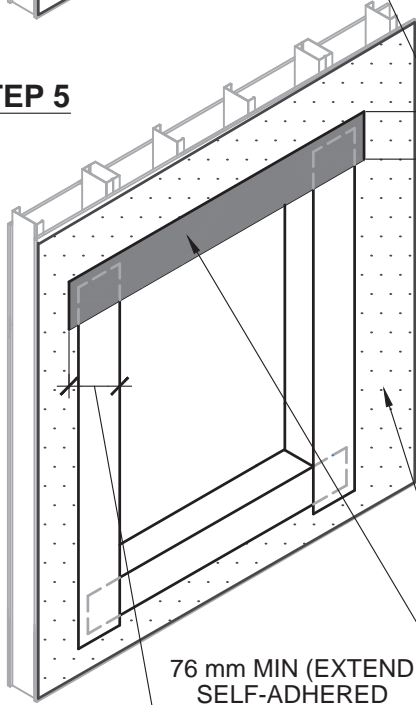
BLUESKIN® SA,
BLUESKIN® SALT,
BLUESKIN® BUTYL
FLASH, FOILSKIN®, OR
AIR-BLOC® LF

76 mm MIN (EXTEND
SELF-ADHERED
FLASHING 25 mm
BEYOND SILL FLASHING

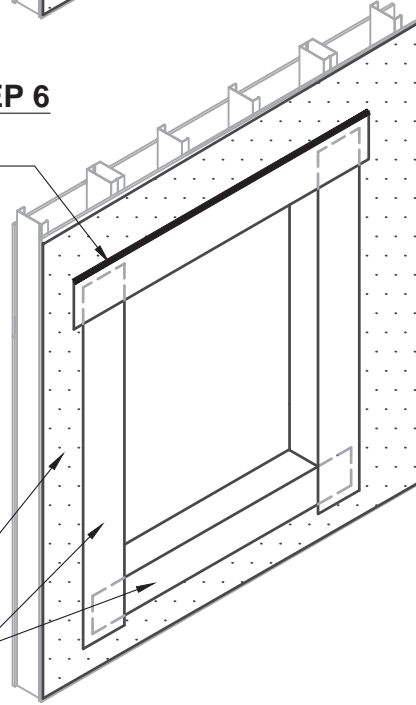
76 mm MIN (EXTEND
SELF-ADHERED
FLASHING 25 mm
BEYOND JAMB
FLASHING

76 mm MIN (EXTEND SELF-ADHERED
FLASHING 25 mm BEYOND SILL FLASHING

STEP 5



STEP 6



SEAL REVERSE LAP
EDGES OF ROUGH
OPENING FLASHINGS
WITH POLYBITUME®
570-05, 925 BES
SEALANT, OR
AIR-BLOC® LF
(TROWEL UNTIL
MEMBRANE IS FIRMLY
COATED TO PROMOTE
WATER SHEDDING)

AIR-BLOC® 16MR

BLUESKIN® SA,
BLUESKIN® SALT,
BLUESKIN® BUTYL
FLASH, FOILSKIN®, OR
AIR-BLOC® LF

76 mm MIN (EXTEND
SELF-ADHERED
FLASHING 25 mm
BEYOND JAMB
FLASHING

NOTES:

- SEE NOTES ON DETAIL AB16MR - 6B2A.

Henry®

15 Wallsend Drive,
Scarborough, Ontario, M1E 3X6
800-486-1278 • www.henry.com

MANUFACTURER GUIDE DETAILS ARE FOR REFERENCE ONLY. HENRY® DOES NOT ASSUME RESPONSIBILITY FOR ERRORS OR DEVIATIONS IN DESIGN OR ENGINEERING. PROJECT SPECIFIC VERIFICATION IS RECOMMENDED PRIOR TO INSTALLATION.

AIR-BLOC® 16MR AIR AND VAPOUR BARRIER

REBATE WINDOW

METHOD B - AIR-BLOC® 16MR INSTALLED
AFTER FLASHING - PART 2 OF 2

SCALE: N.T.S.

10-25-2016

AB16MR-6B2B