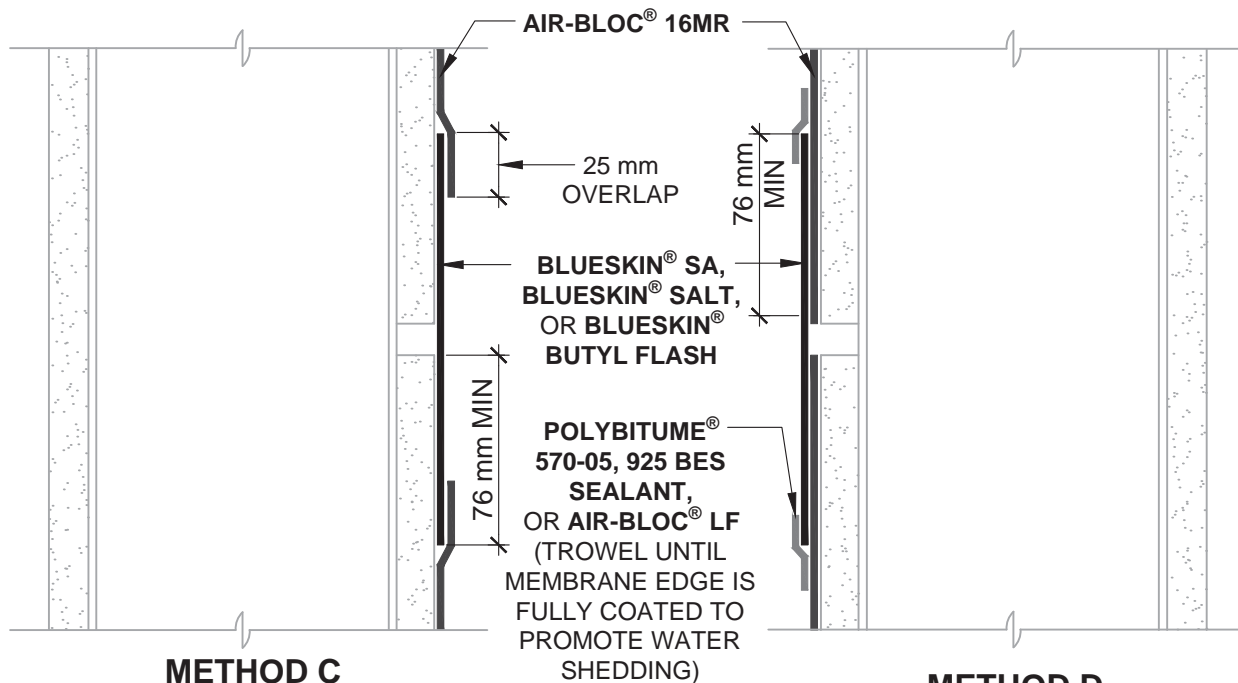


**METHOD A**  
GAPS UP TO 6 mm WIDE

**METHOD B**  
GAPS UP TO 12 mm WIDE



**METHOD C**  
GAPS UP TO 12 mm WIDE

**METHOD D**  
GAPS UP TO 12 mm WIDE

**NOTES:**

1. DETAIL SHOWS **AIR-BLOC® 16MR** ASSEMBLY INSTALLED OVER EXTERIOR GRADE GYPSUM SHEATHING. OTHER ACCEPTABLE SUBSTRATES INCLUDE PLYWOOD, OSB, CONCRETE, AND CONCRETE BLOCK.
2. INSULATION AND CLADDING NOT SHOWN FOR CLARITY.
3. SEAL END OF DAY AND PERMANENTLY EXPOSED REVERSE LAP EDGES WITH **POLYBITUME® 570-05, 925 BES SEALANT, OR AIR-BLOC® LF**.
4. THE **AIR-BLOC® 16MR** ASSEMBLY SHALL BE INSTALLED TO PROVIDE A CONTINUOUS BARRIER TO PREVENT AIR AND WATER INTRUSION.
5. REFER TO **AIR-BLOC® 16MR** GUIDE SPECIFICATION FOR RECOMMENDED INSTALLATION PROCEDURES.

**Henry®**

15 Wallsend Drive,  
Scarborough, Ontario, M1E 3X6  
800-486-1278 • www.henry.com

MANUFACTURER GUIDE DETAILS ARE FOR REFERENCE ONLY. HENRY® DOES NOT ASSUME RESPONSIBILITY FOR ERRORS OR DEVIATIONS IN DESIGN OR ENGINEERING. PROJECT SPECIFIC VERIFICATION IS RECOMMENDED PRIOR TO INSTALLATION.

**AIR-BLOC® 16MR AIR AND VAPOUR BARRIER**

**CONSTRUCTION JOINTS**

SUBSTRATE GAPS UP TO 6 mm WIDE MAXIMUM AND  
SUBSTRATE GAPS UP TO 12 mm WIDE MAXIMUM

SCALE: N.T.S.

10-25-2016

**AB16MR - 8A**