

**BLUESKIN® BUTYL FLASH, BLUESKIN® SA, BLUESKIN® SALT, OR FOILSKIN®**

EXTEND FLASHING  
76 mm MIN

**AIR-BLOC® 16MR**  
OR HENRY® VAPOUR PERMEABLE AIR BARRIER

CLADDING AND INSULATION AS SPECIFIED

**BLUESKIN® BUTYL FLASH, BLUESKIN® SA, BLUESKIN® SALT, OR FOILSKIN®**

LAP FLASHING 76 mm MIN ONTO EACH SIDE OF SUBSTRATE AT DISSIMILAR MATERIAL TRANSITIONS

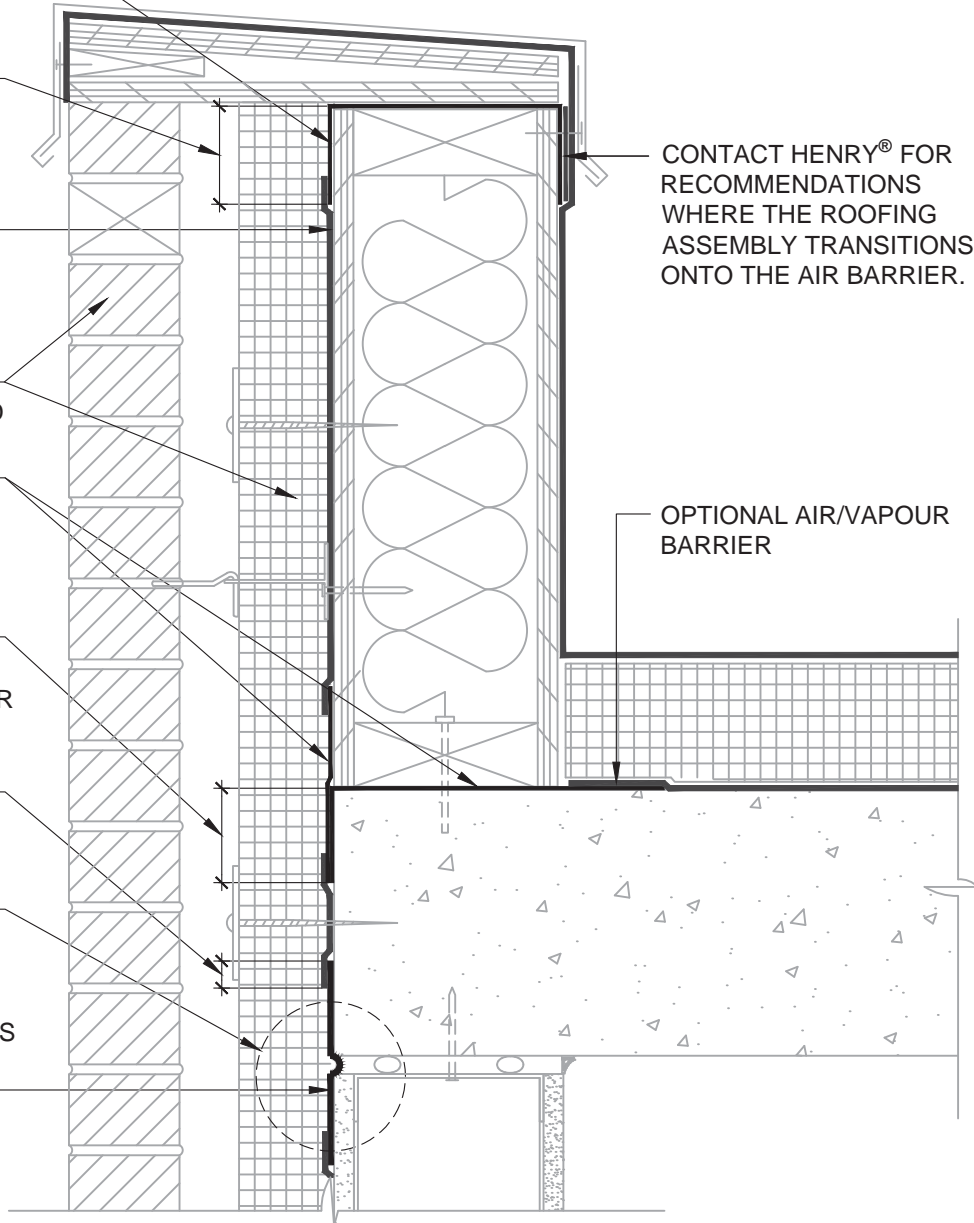
25 mm OVERLAP WHERE **AIR-BLOC® 16MR** LAPS ONTO FLASHING

REFER TO HENRY® DETAIL AB16MR - 8B OR AB16MR - 8C SUBSTRATE GAPS FOR DEFLECTION JOINT RECOMMENDATIONS

**BLUESKIN® BUTYL FLASH, BLUESKIN® SA, BLUESKIN® SALT, OR FOILSKIN®**

CONTACT HENRY® FOR RECOMMENDATIONS WHERE THE ROOFING ASSEMBLY TRANSITIONS ONTO THE AIR BARRIER.

OPTIONAL AIR/VAPOUR BARRIER



**NOTES:**

1. DETAIL SHOWS **AIR-BLOC® 16MR** ASSEMBLY INSTALLED OVER EXTERIOR GRADE GYPSUM SHEATHING. OTHER ACCEPTABLE SUBSTRATES INCLUDE PLYWOOD, OSB, CONCRETE, AND CONCRETE BLOCK.
2. THE **AIR-BLOC® 16MR** ASSEMBLY SHALL BE INSTALLED TO PROVIDE A CONTINUOUS BARRIER TO PREVENT AIR AND WATER INTRUSION.
3. AVOID INSTALLATION OF A DOUBLE VAPOUR BARRIER AT PARAPET WALL CONTACT HENRY® FOR DESIGN OPTIONS.
4. WHERE REQUIRED PRIME SUBSTRATE PRIOR TO SELF-ADHERED FLASHING INSTALLATION. REFER TO PRODUCT SPECIFIC TECHNICAL DATA SHEET (TDS) FOR PRIMER PRODUCT AND APPLICATION RATE RECOMMENDATIONS.
5. REFER TO **AIR-BLOC® 16MR** GUIDE SPECIFICATION FOR RECOMMENDED INSTALLATION PROCEDURES.

**Henry®**

15 Wallsend Drive,  
Scarborough, Ontario, M1E 3X6  
800-486-1278 • www.henry.com

MANUFACTURER GUIDE DETAILS ARE FOR REFERENCE ONLY. HENRY® DOES NOT ASSUME RESPONSIBILITY FOR ERRORS OR DEVIATIONS IN DESIGN OR ENGINEERING. PROJECT SPECIFIC VERIFICATION IS RECOMMENDED PRIOR TO INSTALLATION.

**AIR-BLOC® 16MR AIR AND VAPOUR BARRIER**

**PARAPET TRANSITION**

ROOFING ASSEMBLY WRAPPING  
OVER TOP OF PARAPET - CONTINUOUS INSULATION (CI)

SCALE: N.T.S.

10-25-2016

**AB16MR - 9B1**