

**BLUESKIN® VP160**

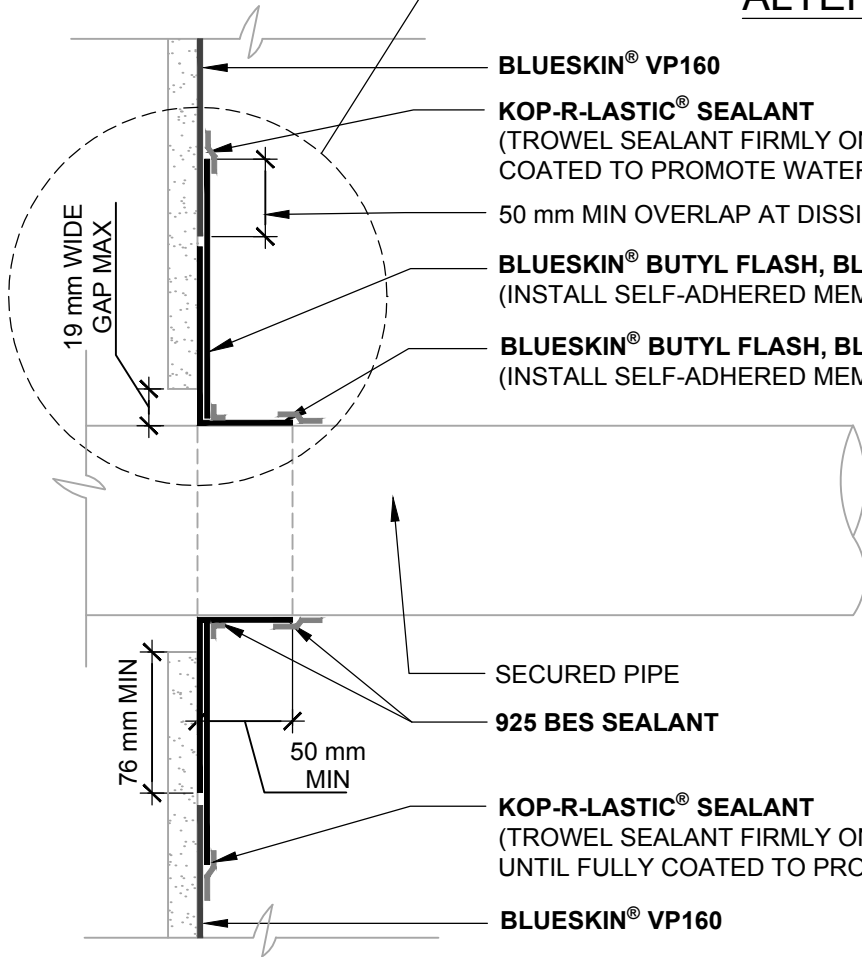
50 mm MIN OVERLAP AT DISSIMILAR MATERIAL SEAM

**BLUESKIN® BUTYL FLASH, BLUESKIN® SA, BLUESKIN® SALT, OR FOILSKIN®**  
(INSTALL SELF-ADHERED MEMBRANES IN A TARGET PATTERN)

**925 BES SEALANT**

**BLUESKIN® BUTYL FLASH, BLUESKIN® SA, BLUESKIN® SALT, OR FOILSKIN®**  
(INSTALL SELF-ADHERED MEMBRANES IN A FINGER PATTERN)

**ALTERNATE LAP METHOD**



**BLUESKIN® VP160**

**KOP-R-LASTIC® SEALANT**

(TROWEL SEALANT FIRMLY ONTO WATER RESISTIVE AIR BARRIER UNTIL FULLY COATED TO PROMOTE WATER SHEDDING)

50 mm MIN OVERLAP AT DISSIMILAR MATERIAL SEAM

**BLUESKIN® BUTYL FLASH, BLUESKIN® SA, BLUESKIN® SALT, OR FOILSKIN®**  
(INSTALL SELF-ADHERED MEMBRANES IN A TARGET PATTERN)

**BLUESKIN® BUTYL FLASH, BLUESKIN® SA, BLUESKIN® SALT, OR FOILSKIN®**  
(INSTALL SELF-ADHERED MEMBRANES IN A FINGER PATTERN)

SECURED PIPE

**925 BES SEALANT**

**KOP-R-LASTIC® SEALANT**

(TROWEL SEALANT FIRMLY ONTO WATER RESISTIVE AIR BARRIER UNTIL FULLY COATED TO PROMOTE WATER SHEDDING)

**BLUESKIN® VP160**

**NOTES:**

1. DETAIL SHOWS **BLUESKIN® VP160** ASSEMBLY INSTALLED OVER EXTERIOR GRADE GYPSUM SHEATHING. OTHER ACCEPTABLE SUBSTRATES INCLUDE PLYWOOD, OSB, CONCRETE, AND CONCRETE BLOCK.
2. PRIME **BLUESKIN® VP160** WHERE SELF-ADHERED FLASHING LAPS ONTO **BLUESKIN® VP160** WHEN ENHANCED SEAM ADHESION IS DESIRED. RECOMMENDED PRIMERS/ADHESIVES INCLUDE: **BLUESKIN® LVC ADHESIVE, AQUATAC™ PRIMER, HI-TAC™ PRIMER, OR BLUESKIN® ADHESIVE.**
3. REFER TO **BLUESKIN® VP160** INSTALLATION GUIDELINES FOR RECOMMENDED INSTALLATION PROCEDURES.

**Henry®**

15 Wallsend Drive,  
Scarborough, Ontario, M1E 3X6  
800-486-1278 • www.henry.com

MANUFACTURER GUIDE DETAILS ARE FOR REFERENCE ONLY. HENRY® DOES NOT ASSUME RESPONSIBILITY FOR ERRORS OR DEVIATIONS IN DESIGN OR ENGINEERING. PROJECT SPECIFIC VERIFICATION IS RECOMMENDED PRIOR TO INSTALLATION.

**BLUESKIN® VP160 SELF-ADHERED WATER RESISTIVE AIR BARRIER**

**PIPE PENETRATION**

SUBSTRATE GAPS UP TO 19 mm WIDE GAP MAXIMUM  
SELF-ADHERED FLASHING

SCALE: N.T.S.

09-29-2016

**BSVP160 - 2C**