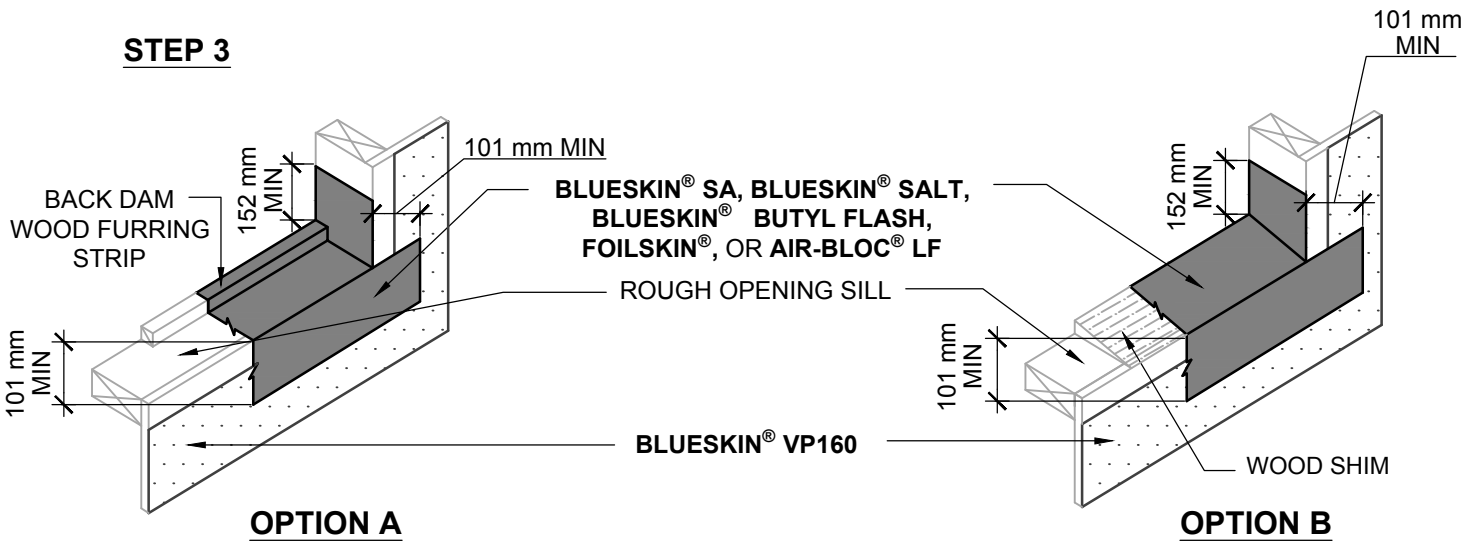
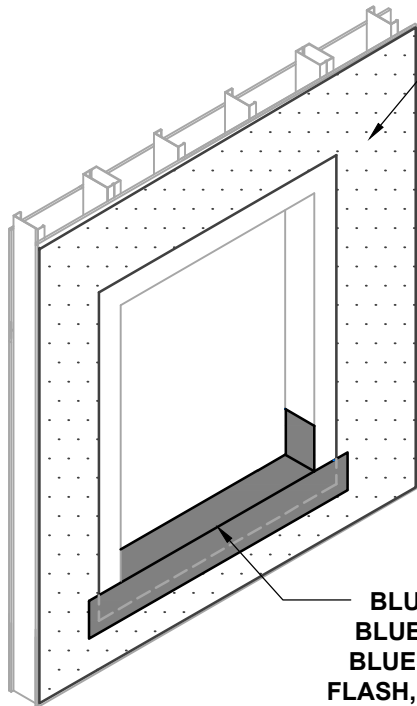


BLUESKIN® VP160 REBATE WINDOW DETAIL GUIDELINES CONSISTS OF THREE PARTS.
 REFER TO DETAIL BSVP160 - 6B1 FOR PREVIOUS STEPS 1-2
 AND DETAIL BSVP160 - 6B3 FOR STEPS 5-7.

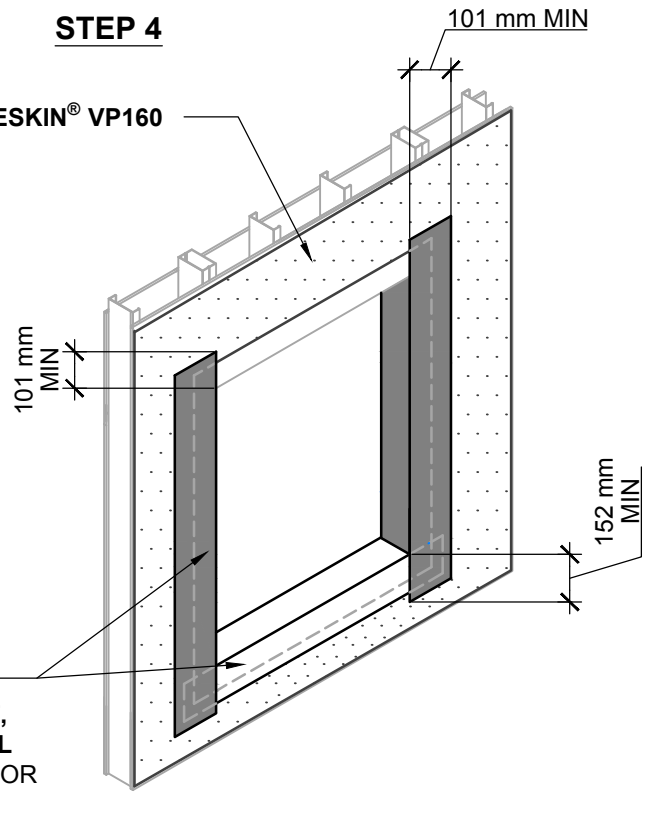
STEP 3



STEP 3 (CONTINUED)



STEP 4



NOTES:

1. REFER TO NOTES BSVP160 - 6B1.

MANUFACTURER GUIDE DETAILS ARE FOR REFERENCE ONLY. HENRY® DOES NOT ASSUME RESPONSIBILITY FOR ERRORS OR DEVIATIONS IN DESIGN OR ENGINEERING. PROJECT SPECIFIC VERIFICATION IS RECOMMENDED PRIOR TO INSTALLATION.

BLUESKIN® VP160 SELF-ADHERED WATER RESISTIVE AIR BARRIER

REBATE WINDOW

SELF-ADHERED OR LIQUID APPLIED FLASHING
 PART 2 OF 3

SCALE: N.T.S.

09-29-2016

BSVP160 - 6B2

Henry®

15 Wallsend Drive,
 Scarborough, Ontario, M1E 3X6
 800-486-1278 • www.henry.com