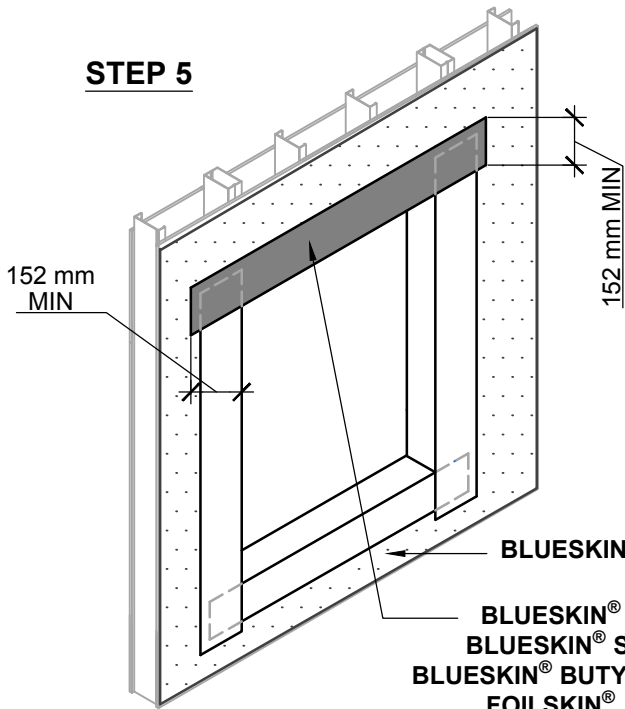
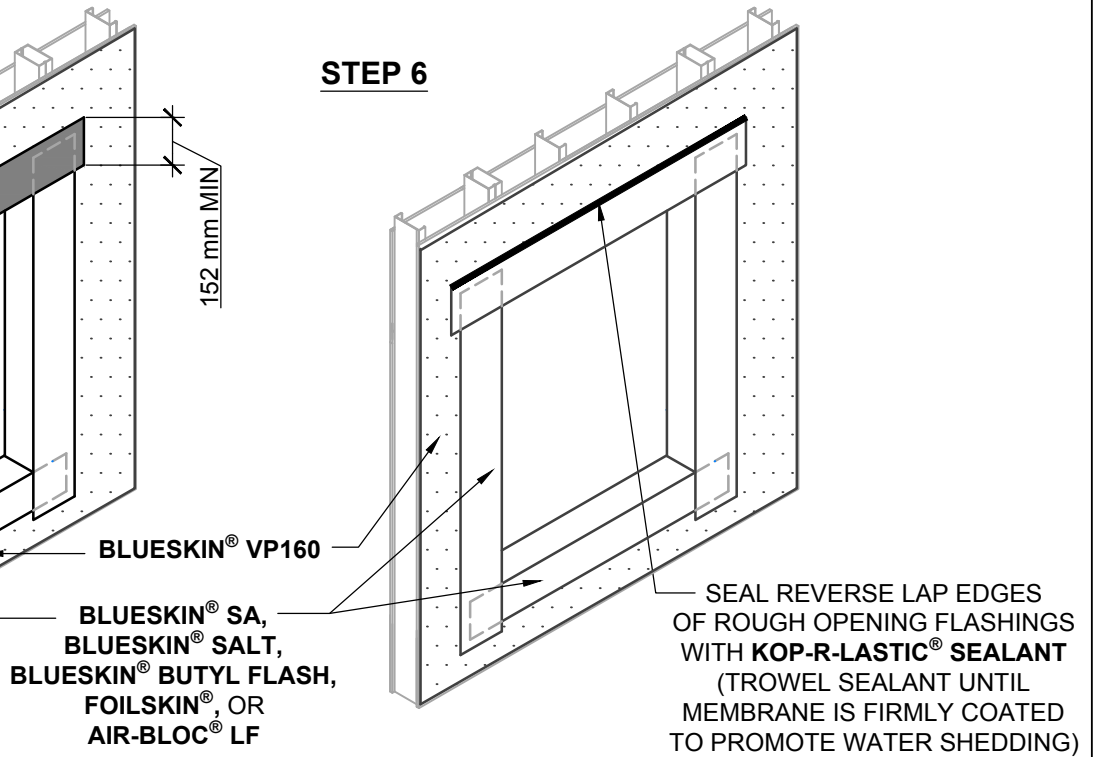


**BLUESKIN® VP160** REBATE WINDOW DETAIL GUIDELINES CONSIST OF THREE PARTS.  
REFER TO DETAILS BSVP160 - 6B1 AND BSVP160 - 6B2 FOR PREVIOUS STEPS 1-4.

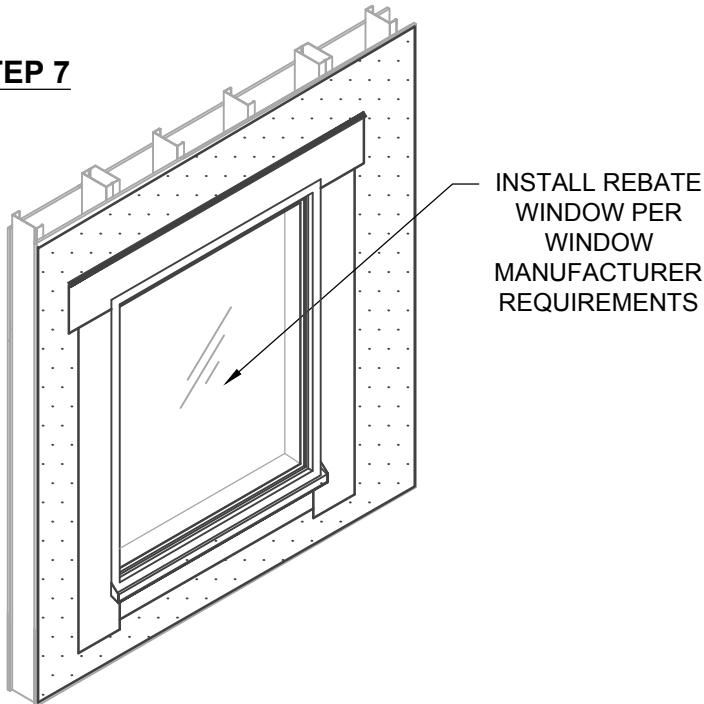
**STEP 5**



**STEP 6**



**STEP 7**



**NOTES:**

1. REFER TO NOTES BSVP160 - 6B1.

**Henry®**

15 Wallsend Drive,  
Scarborough, Ontario, M1E 3X6  
800-486-1278 • www.henry.com

MANUFACTURER GUIDE DETAILS ARE FOR REFERENCE ONLY. HENRY® DOES NOT ASSUME RESPONSIBILITY FOR ERRORS OR DEVIATIONS IN DESIGN OR ENGINEERING. PROJECT SPECIFIC VERIFICATION IS RECOMMENDED PRIOR TO INSTALLATION.

**BLUESKIN® VP160 SELF-ADHERED WATER RESISTIVE AIR BARRIER**

**REBATE WINDOW**

SELF-ADHERED OR LIQUID APPLIED FLASHING  
PART 3 OF 3

SCALE: N.T.S.

09-29-2016

**BSVP160 - 6B3**