

BLUESKIN® VP160

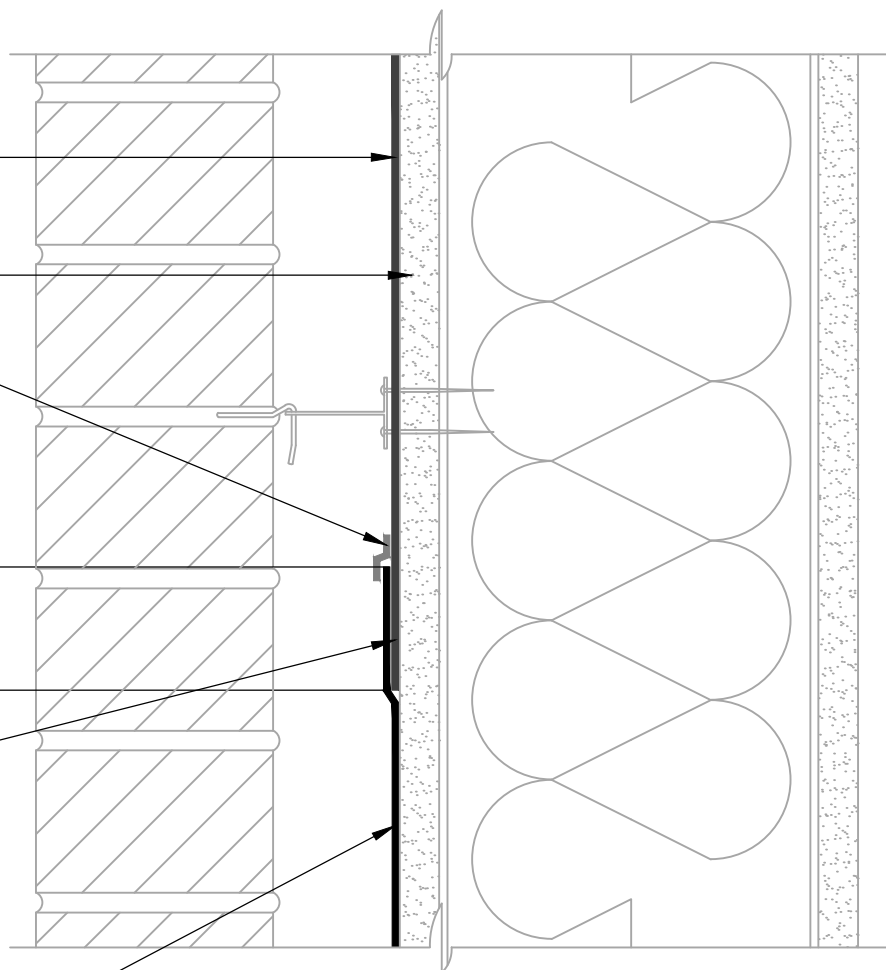
EXTERIOR SHEATHING

KOP-R-LASTIC® SEALANT
(TROWEL SEALANT UNTIL
MEMBRANE EDGE IS FULLY
COATED TO PROMOTE
WATER SHEDDING)

50 mm MIN OVERLAP AT
HORIZONTAL SEAMS

INSTALL **BLUESKIN® LVC**
ADHESIVE, AQUATAC™
PRIMER, HI-TAC™ PRIMER,
OR **BLUESKIN® ADHESIVE**
CONTINUOUSLY TO
ENSURE COMPLETE
COVERAGE OF
ANTICIPATED REVERSE
LAP INSTALLATION AREA

BLUESKIN® SA,
BLUESKIN® SALT,
FOILSKIN®,
OR **BLUESKIN® TWF**



NOTES:

1. DETAIL SHOWS **BLUESKIN® VP160** ASSEMBLY INSTALLED OVER EXTERIOR GRADE GYPSUM SHEATHING. OTHER ACCEPTABLE SUBSTRATES INCLUDE PLYWOOD, OSB, CONCRETE, AND CONCRETE BLOCK.
2. PRIME **BLUESKIN® VP160** WHERE SELF-ADHERED FLASHING LAPS ONTO **BLUESKIN® VP160** WHEN ENHANCED SEAM ADHESION IS DESIRED. RECOMMENDED PRIMERS/ADHESIVES INCLUDE: **BLUESKIN® LVC ADHESIVE, AQUATAC™ PRIMER, HI-TAC™ PRIMER, OR BLUESKIN® ADHESIVE.**
3. THE **BLUESKIN® VP160** ASSEMBLY SHALL BE INSTALLED TO PROVIDE A CONTINUOUS BARRIER TO PREVENT AIR AND WATER INTRUSION.
4. REFER TO **BLUESKIN® VP160** INSTALLATION GUIDELINES FOR RECOMMENDED INSTALLATION PROCEDURES.

Henry®

15 Wallsend Drive,
Scarborough, Ontario, M1E 3X6
800-486-1278 • www.henry.com

MANUFACTURER GUIDE DETAILS ARE FOR REFERENCE ONLY. HENRY® DOES NOT ASSUME RESPONSIBILITY FOR ERRORS OR DEVIATIONS IN DESIGN OR ENGINEERING. PROJECT SPECIFIC VERIFICATION IS RECOMMENDED PRIOR TO INSTALLATION.

BLUESKIN® VP160 SELF-ADHERED WATER RESISTIVE AIR BARRIER

REVERSE LAP

BLUESKIN® SA, FOILSKIN®, OR BLUESKIN® TWF
LAPPING ONTO BLUESKIN® VP160

SCALE: N.T.S.

09-29-2016

BSVP160 - 7C