

METHOD A
GAPS UP TO 50 mm WIDE

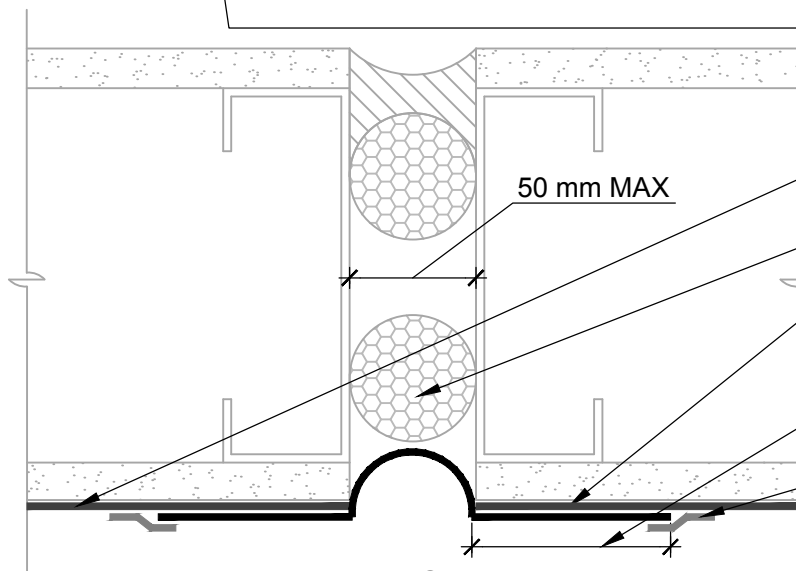
LAP FLASHING ONTO SUBSTRATE 76 mm MIN EACH SIDE OF SUBSTRATE GAP

BLUESKIN® VP160

BLUESKIN® VP160, BLUESKIN® SA, BLUESKIN® SALT, BLUESKIN® BUTYL FLASH, OR FOILSKIN®

LAP **BLUESKIN® VP160** ONTO FLASHING 50 mm MIN AT HORIZONTAL SEAMS AND 76 mm MIN AT VERTICAL SEAMS

BLUESKIN® VP160



METHOD B
GAPS UP TO 50 mm WIDE

BACKER ROD

BLUESKIN® VP160, BLUESKIN® SA, BLUESKIN® SALT, BLUESKIN® BUTYL FLASH, OR FOILSKIN®

LAP FLASHING ONTO SUBSTRATE 76 mm MIN EACH SIDE OF SUBSTRATE GAP

KOP-R-LASTIC® SEALANT
(TROWEL SEALANT UNTIL MEMBRANE EDGE IS FULLY COATED TO PROMOTE WATER SHEDDING)

NOTES:

1. DETAIL SHOWS **BLUESKIN® VP160** ASSEMBLY INSTALLED OVER EXTERIOR GRADE GYPSUM SHEATHING. OTHER ACCEPTABLE SUBSTRATES INCLUDE PLYWOOD, OSB, CONCRETE, AND CONCRETE BLOCK.
2. PRIME **BLUESKIN® VP160** WHERE SELF-ADHERED FLASHING LAPS ONTO **BLUESKIN® VP160** WHEN ENHANCED SEAM ADHESION IS DESIRED. RECOMMENDED PRIMERS/ADHESIVES INCLUDE: **BLUESKIN® LVC ADHESIVE, AQUATAC™ PRIMER, HI-TAC™ PRIMER, OR BLUESKIN® ADHESIVE.**
3. THE **BLUESKIN® VP160** ASSEMBLY SHALL BE INSTALLED TO PROVIDE A CONTINUOUS BARRIER TO PREVENT AIR AND WATER INTRUSION.
4. REFER TO **BLUESKIN® VP160** INSTALLATION GUIDELINES FOR RECOMMENDED INSTALLATION PROCEDURES.

Henry®

15 Wallsend Drive,
Scarborough, Ontario, M1E 3X6
800-486-1278 • www.henry.com

MANUFACTURER GUIDE DETAILS ARE FOR REFERENCE ONLY. HENRY® DOES NOT ASSUME RESPONSIBILITY FOR ERRORS OR DEVIATIONS IN DESIGN OR ENGINEERING. PROJECT SPECIFIC VERIFICATION IS RECOMMENDED PRIOR TO INSTALLATION.

BLUESKIN® VP160 SELF-ADHERED WATER RESISTIVE AIR BARRIER

CONSTRUCTION JOINTS

SUBSTRATE GAPS UP TO 50 mm WIDE MAXIMUM
SELF-ADHERED FLASHING

SCALE: N.T.S. 09-29-2016

BSVP160 - 8C