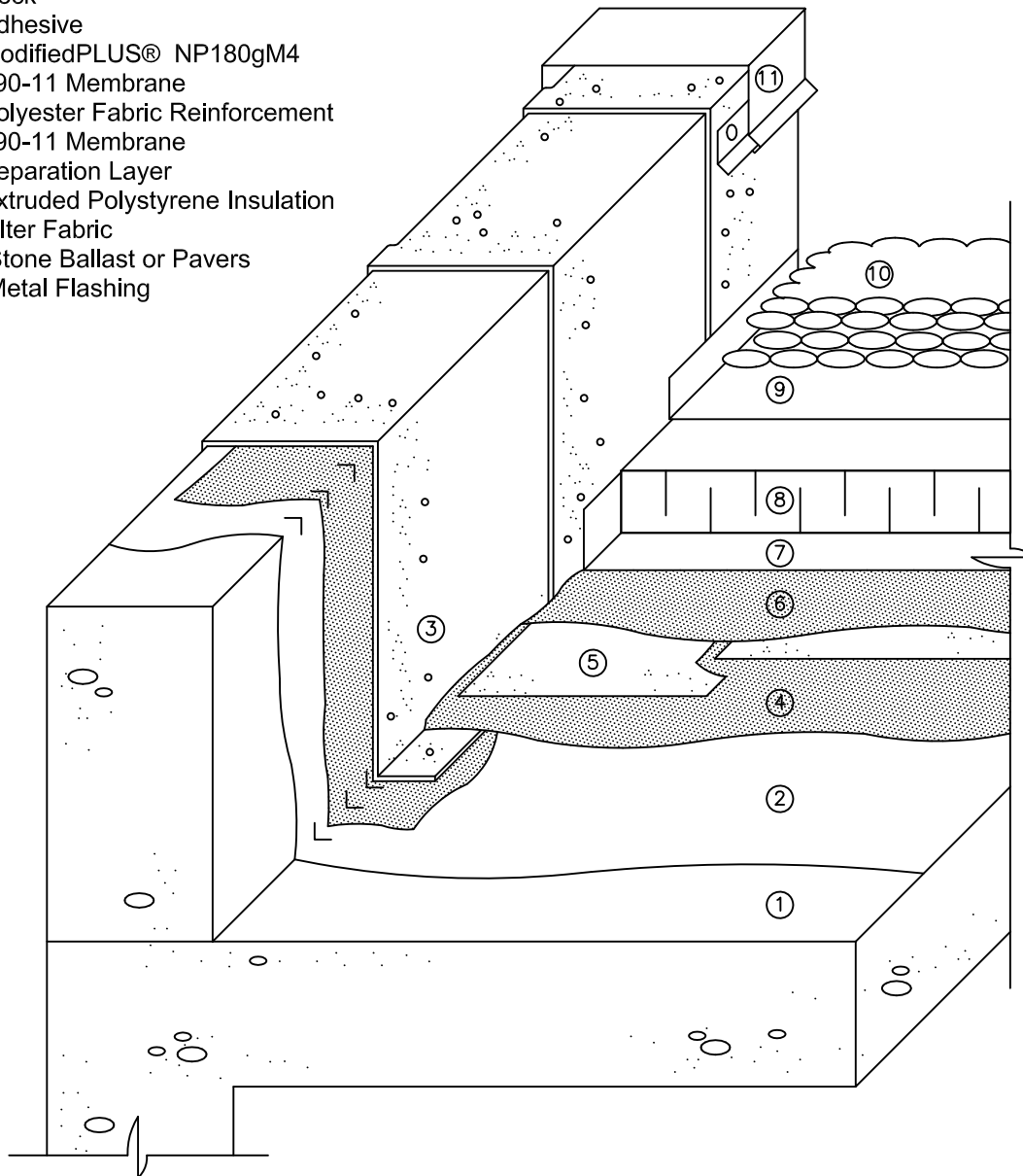


1. Deck
2. Adhesive
3. modifiedPLUS® NP180gM4
4. 790-11 Membrane
5. Polyester Fabric Reinforcement
6. 790-11 Membrane
7. Separation Layer
8. Extruded Polystyrene Insulation
9. Filter Fabric
10. Stone Ballast or Pavers
11. Metal Flashing



Notes

1. System detail showing modifiedPLUS® NP180gM4 modified bitumen sheet as the flashing membrane. The NP180gM4 is embedded in a 3mm (125 mils) coat of 790-11 hot applied rubberized asphalt.
2. The modifiedPLUS® NP180gM4 membrane has a ceramic granule surface which is designed to be an exposed finished surface.

790-11 Membrane P.M.R. Assembly

SYSTEM DETAIL 2

CONCRETE DECK

Scale: N.T.S.

Plot: 1:10

Issued: 05-14-97

Revision: 05

HR-2E97



15 Walsend Drive, Toronto ON M1E 3X6
 Technical Services - 800-486-1278
 Email: techservices@henry.com
 www.ca.henry.com