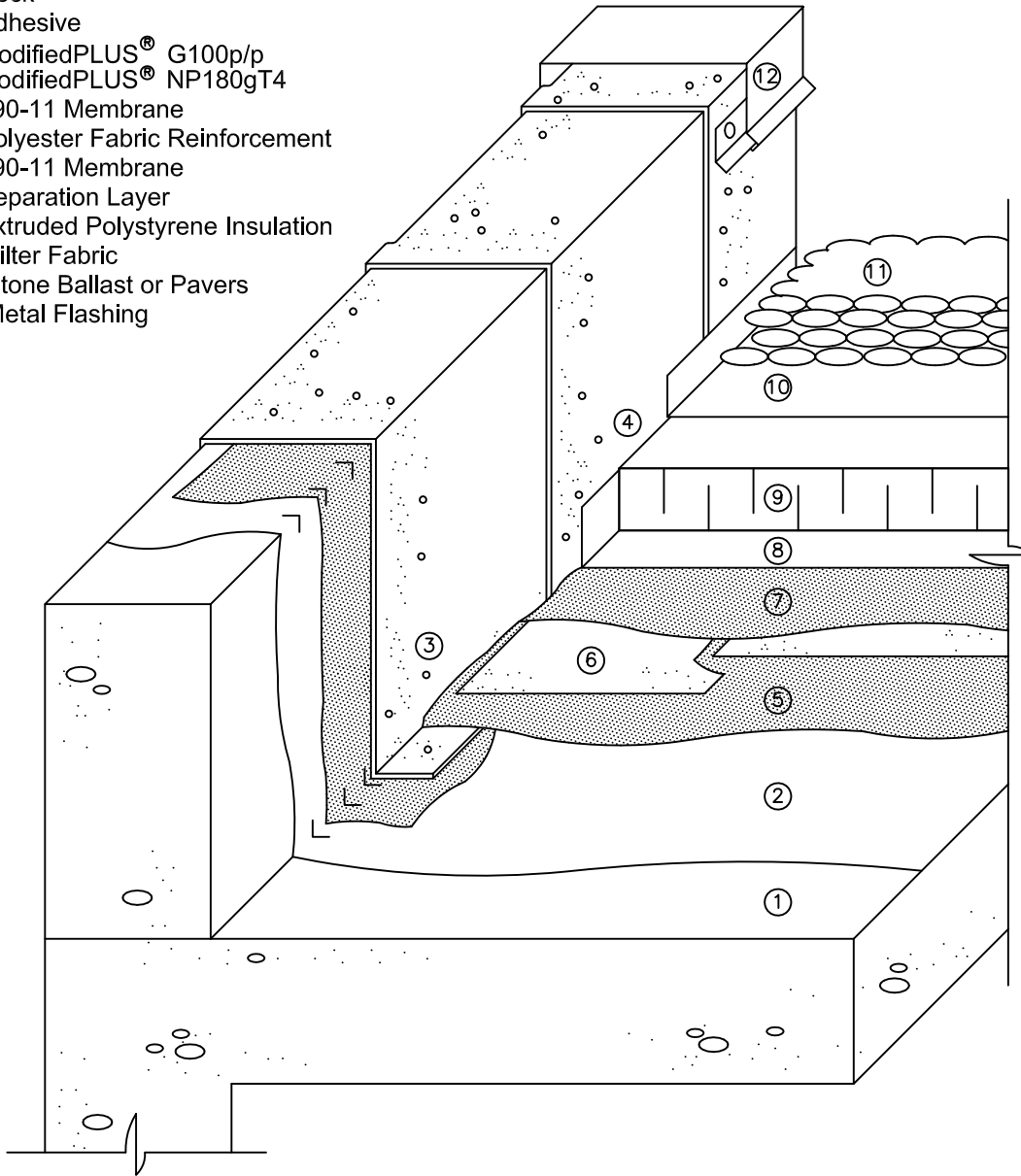


1. Deck
2. Adhesive
3. modifiedPLUS® G100p/p
4. modifiedPLUS® NP180gT4
5. 790-11 Membrane
6. Polyester Fabric Reinforcement
7. 790-11 Membrane
8. Separation Layer
9. Extruded Polystyrene Insulation
10. Filter Fabric
11. Stone Ballast or Pavers
12. Metal Flashing



Notes

1. System detail showing modifiedPLUS® G100p/p base sheet and a modifiedPLUS® NP180gT4 cap sheet, a two ply thermofused SBS modified bitumen flashing membrane system.
2. The two SBS modified bitumen membranes are typically thermofused in place prior to applying the 790-11 membrane system.
3. The adhesive for the 790-11 and the modifiedPLUS® membranes are the same. Use either Poly-Tac™ a polymer modified adhesive or 910-01 an asphalt penetrating primer.
4. Alternatively, for wood parapets use modifiedPLUS® NP180 Tack Sheet a self-adhered base sheet in place of the modifiedPLUS® G100p/p. Use 930-38 for the modifiedPLUS® NP180 Tack Sheet.

790-11 Membrane P.M.R. Assembly

SYSTEM DETAIL 4

CONCRETE DECK

Scale: N.T.S.

Plot: 1:10

Issued: 05-14-97

Revision: 05

HR-4E97



15 Wallsend Drive, Toronto ON M1E 3X6
 Technical Services - 800-486-1278
 Email: techservices@henry.com
 www.ca.henry.com