

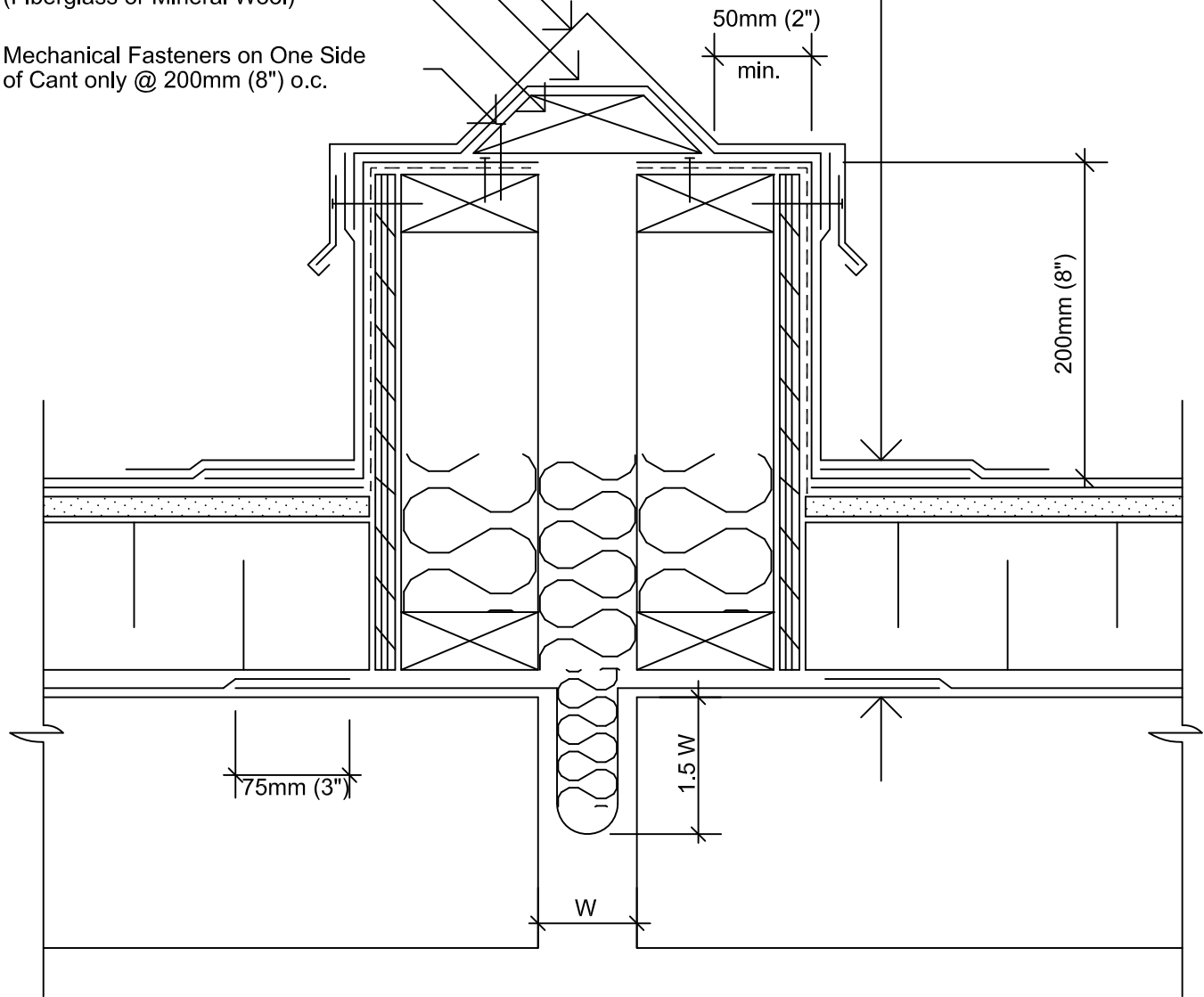
Metal Flashing

modifiedPLUS® Base Flashing

Prefabricated Cant Strip
(Fiberglass or Mineral Wool)

Mechanical Fasteners on One Side
of Cant only @ 200mm (8") o.c.

modifiedPLUS® Cap Flashing
modifiedPLUS® Cap Sheet
modifiedPLUS® Base Flashing
modifiedPLUS® Base Sheet
Overlay
Primary Insulation
Air/Vapour Barrier
Deck



Notes

1. The base sheet flashing is thermofused to the horizontal surface and vertical surface only and is left unbonded over the prefabricated cant strip.
2. This detail is recommended for expansion joints up to 50mm (2") wide.
3. A polyester reinforced base sheet flashing is required over the cant strip.
4. Wood cant strips are not acceptable over the expansion joint.
5. The base sheet may extend 25mm (1") up the vertical to provide temporary watertightness. Ensure edge is sealed.

modifiedPLUS® Roofing Systems

EXPANSION JOINT

CONVENTIONAL ROOFING ASSEMBLY

Scale: N.T.S.

Plot: 1:5

Issued: 05-14-97

Revision: 05

MB-14E97



15 Wallsend Drive, Toronto ON M1E 3X6
 Technical Services - 800-486-1278
 Email: techservices@henry.com
 www.ca.henry.com